

FRIGIDAIRE



Comfort SYSTEMS

Up to 20 SEER iQ Drive® Air Conditioners & Heat Pumps



TOTAL HOME *Comfort* AND WHAT IT MEANS TO YOU

The Frigidaire iQ Drive® complete comfort system is quite simply one of the smartest comfort systems available. At 43 percent more efficient than a basic system, it can drastically reduce your energy bills while dramatically improving the comfort of your home. Less humidity. More even temperatures. Ultra quiet. For total home comfort, choose Frigidaire iQ Drive.

Our full line of air conditioners, heat pumps and accessories allow you to maintain total home comfort year round.

The importance of being up to 20 SEER.

Your air conditioner's or heat pump's cooling efficiency is measured by a Seasonal Energy Efficiency Ratio, or SEER. The higher the SEER rating, the more efficiently your unit operates. Greater efficiency means bigger savings on utility costs. Heat pumps are also rated by Heating Seasonal Performance Factor (HSPF). This is the measure of the average number of Btus of heat delivered for every watt-hour of electricity used.

Frigidaire will take care of the comfort.

▲ **Delivering peace of mind unit after unit.**

Every unit is triple checked at each manufacturing stage, for an average of 144 quality checks as your unit is built. In addition, all electrical and mechanical components are 100% fired and tested on the manufacturing line. When your contractor arrives, you can be sure that only the highest quality air conditioner or heat pump is being delivered to your home.

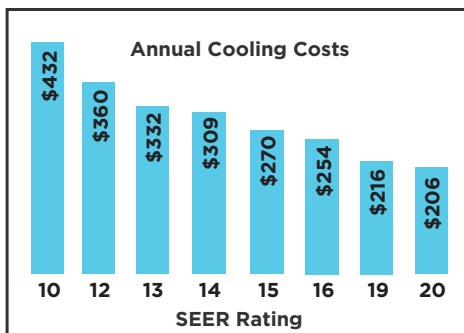
▲ **Extending the life of your unit.**

High quality doesn't just happen. It must be engineered from the start. All iQ Drive air conditioners and heat pumps are designed for maximum compressor performance.

▲ **Incredibly quiet.**

The iQ Drive air conditioner and heat pump include swept-wing fan blades, absorbing base pans, compressor sound blankets and highly effective mufflers to decrease energy consumption and sound levels.

Extreme energy savings.



Annual costs based on 36,000 Btu unit, 1,500 cooling load hours, and .08/kwh. Actual costs may vary depending on climate conditions, energy rates and patterns of usage.

▲ **Aesthetically pleasing and designed for easy care.**

Smooth and practical lines make your Frigidaire air conditioner or heat pump eye-appealing. All units receive a glossy, powder-paint finish for increased durability and corrosion resistance.

▲ **Advanced technology.**

All air conditioner models feature all-aluminum coils for increased resistance to corrosion. This innovative design decreases unit weight and refrigerant requirements, while increasing reliability.

▲ **Built to last.**

From a long-lasting motor to the one-piece orifice, your unit will provide years of trouble-free, reliable service.

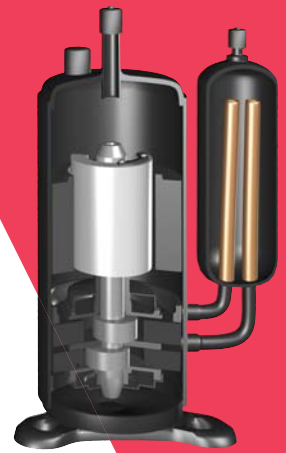


iQ Drive® technology.

iQ Drive air conditioners and heat pumps utilize inverter-driven rotary technology. The iQ Drive system's inverter component converts the electrical current from AC to DC and, in doing so, can vary the compressor and fan motor speeds.

Inverter-driven rotary technology is different in that it is almost always running. The unit can modulate in five steps from 49 to 118 percent of capacity, instantly adjusting to exactly offset the cooling or heating demands on the home. Because the iQ Drive unit doesn't cycle on and off like a traditional system, it saves energy and considerably reduces sound levels. In fact, sound ratings are from 57-73 decibels depending on model – some of the lowest in the industry.

iQ Drive®



iQ Drive with Air Handler

- 20-SEER Air Conditioners
- Up to 19-SEER 10.0-HSPF Heat Pumps



iQ Drive with Gas Furnace

- 20-SEER Air Conditioners
- Up to 19-SEER 10.0-HSPF Heat Pumps

Both are available with:

- 96% AFUE Two-Stage, Variable-Speed Gas Furnace
- 95.1% AFUE* Two-Stage, Variable-Speed Gas Furnace
- 80% AFUE* Two-Stage, Variable-Speed Gas Furnace



	Dehumidification Mode	Sound Ratings	Modulation Capacity	Heating Efficiency	ENERGY STAR® Certified	ecoLogic® Seal
20-SEER Air Conditioner	Optional	57-76 dBA**	49%-118% of capacity	N/A	X	X
Up to 19-SEER Heat Pump	Optional	58-73 dBA**	49%-118% of capacity	up to 10.0 HSPF	X	X

** Sound ratings vary per tonnages

Your split system:

Split systems have two main components. The outdoor section is the air conditioner or heat pump, and the indoor section consists of a matched air handler or coil. These two sections work together to provide top performance, maximum efficiency and comfort.

Benefits of a heat pump.

Depending on the climate you live in, a heat pump may be ideal for your family. Heat pumps work similarly to a conventional air conditioner with one big exception – they also provide heat in the winter. You can save 30% to 60% on energy usage during the winter months by switching to a heat pump.

* If installed in SCAQMD only: These furnaces do not meet the SCAQMD Rule 1111 14 ng/J NOx emission limit (14 ng/J), and thus are subject to a mitigation fee of up to \$450. These furnaces are not eligible for the Clean Air Furnace Rebate Program: www.CleanAirFurnaceRebate.com.

Warranty



Frigidaire offers an incredible customer promise to protect your investment. When registered, every product offers one of the best warranties in the industry – a 10-year limited warranty on all parts and our Comfort Quality Pledge, which states that if your compressor or heat exchanger fails within the first 10 years, we will replace the entire unit. Speak to your Frigidaire contractor or visit us at frigidairehvac.com for warranty details.

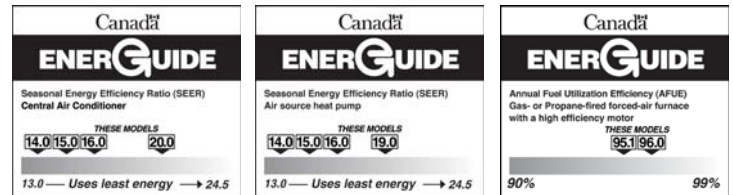


Frigidaire iQ Drive systems are energy-efficient, environmentally-responsible products. Look for the ecoLogic® seal.



ENERGY STAR® certification is awarded to products designed to reduce energy consumption and utility costs. To qualify, split-system air conditioners and heat pumps must have a Seasonal Energy Efficiency Ratio (SEER) rating of 15.0 or higher and an Energy Efficiency Ratio (EER) of 12.5 or higher. Split-system heat pumps are also rated by a Heating Seasonal Performance Factor (HSPF) and must have a rating of 8.5 or higher.

For more information visit us at frigidairehvac.com



Proper sizing and installation of equipment is critical to achieve optimal performance. Split-system air conditioners and heat pumps must be matched with appropriate coil components to meet ENERGY STAR criteria. Ask your contractor for details or visit www.energystar.gov.

iQ Drive® and ecoLogic® are registered trademarks of Nortek Global HVAC, LLC.

FRIGIDAIRE is a registered trademark of Electrolux Home Products Inc. and used under a license from Electrolux Home Products, Inc.

© Nortek Global HVAC, LLC 2022. All Rights Reserved.

Specifications and illustrations subject to change without notice and without incurring obligation.

FRIGIDAIRE

PRINTED IN THE U.S.A.

742E-0122